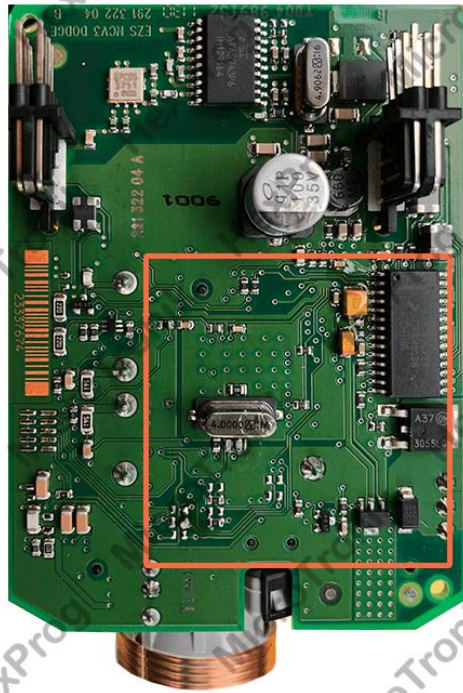


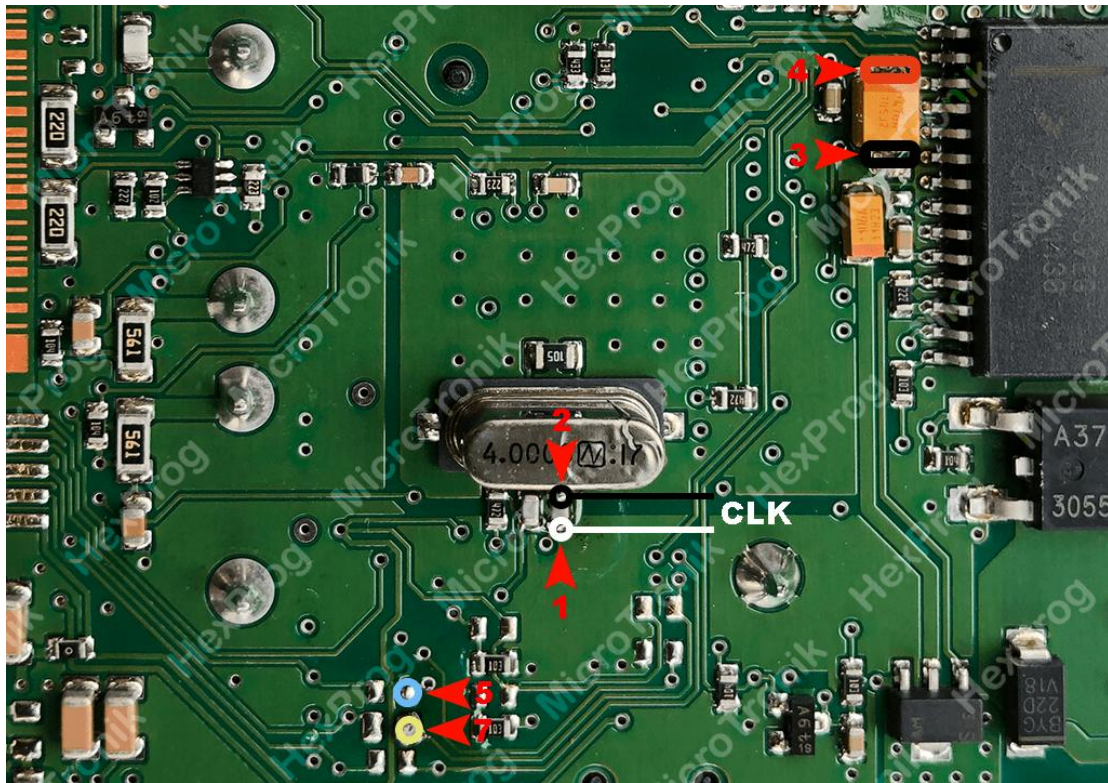
## Benz EIZ W906-CH12

1. Unplug EIZ from the car (Located under driver side trim panel for pedal mechanism. Careless Removal of the module may cause a damage to the car or the control itself, it must be carried under user's RISK)
2. Remove EIZ board from the casing



EIZ W906

3. Solder wires to EIZ based on the below connection diagram using BDM cable



EIZ W906 wiring

4. Select the EIZ/CPU version from HexProg software
5. Do the desired function for read/write EIZ in Software
6. Unsolder wires
7. Connect EIZ back to car

